

## Data Sheet

Customer:

Product: **Wire Wound Power Resistor – QR Series**

Sizes: **75W / 90W / 100W / 120W / 150W / 180W / 200W / 225W /  
240W / 300W / 350W / 375W / 450W / 600W / 750W /  
900W / 1000W / 1200W / 1500W / 2000W**

Issued Date: **5-Feb-21**

Edition: **REV.A**



VIKING TECH CORPORATION  
光韻科技股份有限公司  
No.70, Guangfu N. Rd.,  
Hukou Township, Hsinchu County  
303, Taiwan (R.O.C)

TEL:886-3-5972931  
FAX:886-3-5972935•886-3-5973494  
E-mail:sales@viking.com.tw

VIKING TECH CORPORATION KAOHSIUNG BRANCH  
光韻科技股份有限公司高雄分公司  
No.248-3, Sin-Sheng Rd., Cian-Jhen Dist., Kaohsiung,  
806, Taiwan

TEL:886-7-8217999  
FAX:886-7-8228229  
E-mail:sales@viking.com.tw

VIKING ELECTRONICS (WUXI) CO., LTD.  
光韻電子(無錫)有限公司  
No.22 Xixia Road, Machinery & Industry Park,  
National Hi-Tech Industrial Development Zone  
of Wuxi, Wuxi, Jiangsu Province, China  
Zip Code:214028  
TEL:86-510-85203339  
FAX:86-510-85203667•86-510-85203977  
E-mail:china@viking.com.tw

Produced by (QC)	Checked (QC)	Approved by (QC)	Prepared by (Sales)	Accepted by (Customer)
5-Feb-21	5-Feb-21	5-Feb-21	5-Feb-21	
<i>Kris Chen</i>	<i>Ben Chang</i>	<i>Ben Chang</i>		

## Wire Wound Power Resistor



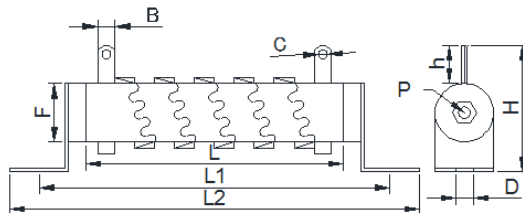
### Features

- Power 75W~2000W
- Tolerance  $\pm 5\%$
- High temperature resistant ceramic
- High heat dissipation
- High stability
- Customization for special specification and requirement is available

### Applications

- Medical Equipment
- Testing / Measurement Equipment
- Printer Equipment
- Automatic Equipment Controller
- Converters
- Communication Device, Cell Phone, GPS, PDA

### Dimensions



Unit: mm

Power Rating	Dimensions										Resistance Range
	L	F	B	L1	C	h	D	L2	H	P	$\pm 5\%$
75W	90 $\pm 5$	25 $\pm 1$	8 $\pm 1$	120 $\pm 5$	5 $\pm 1$	18 $\pm 2$	6 $\pm 1$	144 $\pm 5$	58 $\pm 3$	單 M5x115	0.5 $\Omega$ - 10 $\Omega$
95W	110 $\pm 5$	25 $\pm 1$	8 $\pm 1$	125 $\pm 5$	5 $\pm 1$	18 $\pm 2$	6 $\pm 1$	164 $\pm 5$	60 $\pm 3$	單 M5x135	0.5 $\Omega$ - 11 $\Omega$
100W	90 $\pm 5$	28 $\pm 1$	8 $\pm 1$	120 $\pm 5$	5 $\pm 1$	18 $\pm 2$	6 $\pm 1$	144 $\pm 5$	60 $\pm 3$	單 M5x115	0.5 $\Omega$ - 12 $\Omega$
120W	110 $\pm 5$	28 $\pm 1$	8 $\pm 1$	145 $\pm 5$	5 $\pm 1$	18 $\pm 2$	6 $\pm 1$	164 $\pm 5$	60 $\pm 3$	單 M5x135	0.5 $\Omega$ - 13 $\Omega$
150W	140 $\pm 5$	28 $\pm 1$	8 $\pm 1$	175 $\pm 5$	5 $\pm 1$	18 $\pm 2$	6 $\pm 1$	195 $\pm 5$	60 $\pm 3$	單 M5x165	0.5 $\Omega$ - 15 $\Omega$
180W	160 $\pm 5$	28 $\pm 1$	8 $\pm 1$	190 $\pm 5$	5 $\pm 1$	18 $\pm 2$	6 $\pm 1$	215 $\pm 5$	60 $\pm 3$	單 M5x185	0.5 $\Omega$ - 18 $\Omega$
200W	185 $\pm 5$	28 $\pm 1$	8 $\pm 1$	215 $\pm 5$	5 $\pm 1$	18 $\pm 2$	6 $\pm 1$	239 $\pm 5$	60 $\pm 3$	雙 M5x215	0.25 $\Omega$ - 20 $\Omega$
225W	195 $\pm 5$	28 $\pm 1$	8 $\pm 1$	225 $\pm 5$	5 $\pm 1$	18 $\pm 2$	6 $\pm 1$	249 $\pm 5$	60 $\pm 3$	雙 M5x220	0.5 $\Omega$ - 22 $\Omega$
240W	185 $\pm 5$	35 $\pm 1$	8 $\pm 1$	221 $\pm 5$	5 $\pm 1$	18 $\pm 2$	9 $\pm 1$	250 $\pm 5$	75 $\pm 3$	雙 M5x210	0.5 $\Omega$ - 24 $\Omega$
300W	210 $\pm 5$	35 $\pm 1$	8 $\pm 1$	245 $\pm 5$	5 $\pm 1$	18 $\pm 2$	9 $\pm 1$	268 $\pm 5$	75 $\pm 3$	雙 M5x245	0.5 $\Omega$ - 27 $\Omega$
350W	300 $\pm 5$	28 $\pm 1$	8 $\pm 1$	330 $\pm 5$	5 $\pm 1$	18 $\pm 2$	5 $\pm 1$	355 $\pm 5$	60 $\pm 3$	雙 M5x325	0.5 $\Omega$ - 27 $\Omega$
375W	210 $\pm 5$	40 $\pm 1$	10 $\pm 1$	250 $\pm 5$	5 $\pm 1$	22 $\pm 2$	9 $\pm 1$	277 $\pm 5$	77 $\pm 3$	雙 M5x245	0.5 $\Omega$ - 30 $\Omega$
450W	260 $\pm 5$	40 $\pm 1$	10 $\pm 1$	300 $\pm 5$	5 $\pm 1$	22 $\pm 2$	9 $\pm 1$	327 $\pm 5$	77 $\pm 3$	雙 M5x295	0.5 $\Omega$ - 35 $\Omega$
600W	330 $\pm 5$	40 $\pm 1$	10 $\pm 1$	370 $\pm 5$	5 $\pm 1$	22 $\pm 2$	9 $\pm 1$	400 $\pm 5$	77 $\pm 3$	雙 M5x365	0.5 $\Omega$ - 40 $\Omega$
750W	330 $\pm 5$	50 $\pm 1$	12 $\pm 1$	370 $\pm 5$	6 $\pm 1$	24 $\pm 2$	10 $\pm 1$	400 $\pm 5$	105 $\pm 3$	雙 M5x365	0.5 $\Omega$ - 100 $\Omega$
900W	400 $\pm 5$	50 $\pm 1$	12 $\pm 1$	444 $\pm 5$	6 $\pm 1$	24 $\pm 2$	10 $\pm 1$	469 $\pm 5$	105 $\pm 3$	雙 M5x435	0.5 $\Omega$ - 100 $\Omega$
1000W	460 $\pm 5$	50 $\pm 1$	12 $\pm 1$	505 $\pm 5$	6 $\pm 1$	24 $\pm 2$	10 $\pm 1$	532 $\pm 5$	105 $\pm 3$	雙 M5x495	0.5 $\Omega$ - 120 $\Omega$
1200W	460 $\pm 5$	60 $\pm 1$	15 $\pm 1$	508 $\pm 5$	6 $\pm 1$	30 $\pm 2$	10 $\pm 1$	535 $\pm 5$	112 $\pm 3$	雙 M5x495	0.5 $\Omega$ - 120 $\Omega$
1500W	540 $\pm 5$	60 $\pm 1$	15 $\pm 1$	587 $\pm 5$	6 $\pm 1$	30 $\pm 2$	10 $\pm 1$	615 $\pm 5$	112 $\pm 3$	雙 M5x600	1 $\Omega$ - 160 $\Omega$
2000W	650 $\pm 5$	65 $\pm 1$	15 $\pm 1$	690 $\pm 5$	6 $\pm 1$	30 $\pm 2$	10 $\pm 1$	720 $\pm 5$	115 $\pm 3$	雙 M5x695	1 $\Omega$ - 160 $\Omega$

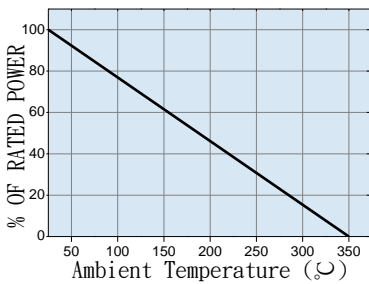
Resistor Body Color: Green

**Wire Wound Power Resistor**

**Part Numbering**

QR	300W	R500	J	B
Product Type	Power Rating	Resistance	Resistance Tolerance	Mounting
QR: Q Type	75W: 75W 90W: 90W 100W: 100W 120W: 120W 150W: 150W 180W: 180W 200W: 200W 225W: 225W 240W: 240W 300W: 300W 350W: 350W 375W: 375W 450W: 450W 600W: 600W 750W: 750W 900W: 900W 1000W: 1000W 1200W: 1200W 1500W: 1500W 2000W: 2000W	R500: 0.5Ω 0010: 1Ω 0100: 10Ω 1000: 100Ω	J: ±5%	B: With Bracket

**Derating**



**Electrical Characteristics**

Characteristics	Limits
Resistance and Resistance Tolerance	Range Resistance tolerance ±5%(J)
Temperature Coefficient	FCHR-2 0.14X1.2m/m 1000~1200ppm/°C max (according to the material)
Power Rating Load	$\Delta R/R \leq \pm(1\% + 0.05\Omega)$ temperature 350°C max
Short-time Overload	$\Delta R/R \leq \pm(2\% + 0.05\Omega)$
Insulation Resistance	DC500V 100MΩ min
Dielectric Withstanding Voltage	AC2500V 1.5MA 1 minute

- These resistors are made by winding resistance ribbon around a ceramic tube in wave shape, externally coated with non flame paint.
- They are extremely good in dissipation of heat, small in size, able to take large load.
- Fit for use on heavy electric machines and production machines.